

LOVEGROVE

ADRIATECH
TECHNOLOGY MEETS ART

Premium Self Serve and Dry Bay Structures

QUADRA NOVA



Official Australian Distributor for Adriatech



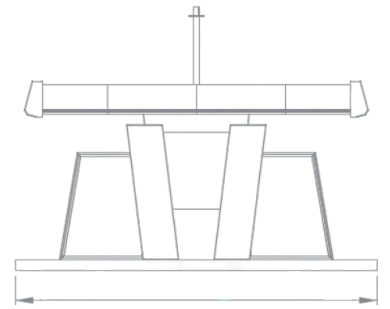
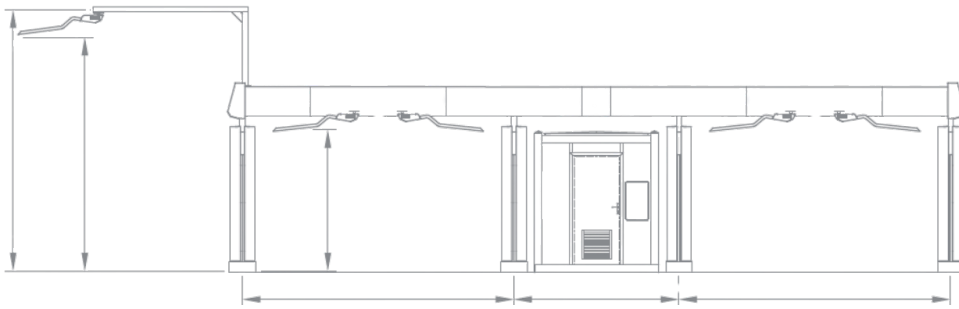
ADRIATECH
TECHNOLOGY MEETS ART

The Quadra Nova: The Future of Car Wash Architecture

The Quadra Nova represents the pinnacle of modern car wash architecture, moving away from traditional, slow-build masonry toward a high-performance modular ecosystem. Designed for operators who demand a blend of visual impact and structural longevity, the Quadra Nova streamlines the path from site preparation to first wash.

QUADRA NOVA

CAR WASH STRUCTURE



STANDARD DIMENSIONS

Wash Bay Width : 5.1m

Wash Bay Depth : 7.5m

Plant Room Width : 3m

Wash Bay Height : 3.4m (based on plinth height of 250mm)



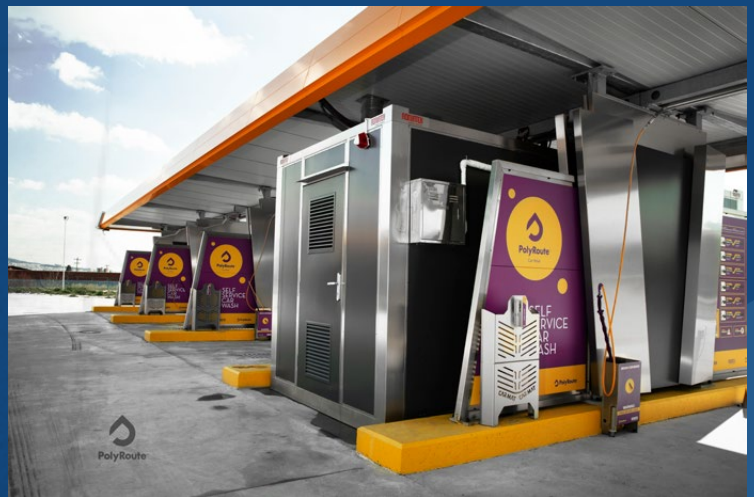
Core Advantages & Design Philosophy

- **Modular Intelligence:** Our "plug-and-play" design reduces on-site complexity. Pre-engineered components ensure a faster build time, allowing you to commence operations weeks ahead of traditional construction schedules.
- **Cost Efficiency:** Minimised on-site labour and reduced waste during the assembly phase lead to significant savings in initial capital expenditure.
- **Architectural Aesthetics:** A sleek, futuristic profile that stands out in any landscape, turning a functional utility into a local landmark that naturally attracts drive-by traffic.
- **The Stainless Steel Edge:** Built using a hybrid of 304/316 Stainless Steel and heavy-duty galvanized steel for maximum corrosion resistance and long-term resale value.
- **High-Performance Materials:** Lightweight yet robust composite panels provide excellent rigidity and weather resistance while allowing for a clean, modern architectural appearance.



Technical Features & Marketability

- **Customised Branding:** The structure acts as a canvas for your business. With integrated signage and customisable colour schemes, your brand identity is baked into the architecture.
- **Advanced LED Bay Lighting:** High-intensity, energy-efficient LED systems ensure the bays are bright and inviting 24/7, increasing customer confidence and nighttime throughput.
- **Traffic Light Safety System:** Integrated visual cues manage vehicle flow with precision, enhancing safety for both staff and customers while reducing bay bottlenecks.
- **Versatile Service Mix:** One cohesive modular design can be used for either self-serve bays, vacuum bays, vending or dog wash zones.



Australian Engineering Excellence

Our structures are engineered specifically for the Australian environment and are fully compliant with all relevant local standards, providing peace of mind regarding structural integrity and building code compliance:

- AS 4100-2020: Steel Structures.
- AS 1170.2: Structural Design Actions (Wind Actions).
- AS 1250 Parts 1 & 2: Use of Steel in Structures.
- Additional region-specific static and structural calculations can be undertaken for wind classifications outside Australian Region A areas, in accordance with AS 1170.2 requirements.

LOVEGROVE

Your Partner in Professional Wash Solutions

With over 70 years of experience, Lovegrove has built a trusted national reputation for excellence. Our car wash division is a cornerstone of our integrated trade services, backed by extensive project expertise and a commitment to high-quality, durable outcomes.

Now representing Adriatech across Australia, we deliver versatile systems designed to withstand the rigours of busy, modern operations. Our approach focuses on long-term quality and lifecycle cost-efficiency, ensuring your investment is both high-performing and future-ready.

Why Partner with Lovegrove?

- **Certified Excellence:** Our operations are backed by a national technical team and ISO-certified management systems (9001, 45001, and 14001), ensuring regulatory compliance and effective risk management.
- **Custom Integration:** We enhance Adriatech systems by integrating locally proven, global technologies through exclusive distribution partnerships, creating premier turnkey solutions tailored to the Australian market.
- **Collaborative Delivery:** Through long-standing partnerships with developers, engineers, and investors, we provide seamless project coordination and premium infrastructure.

In a sector facing increasing cost pressures, Lovegrove remains uniquely positioned to deliver state-of-the-art, cost-effective solutions that support the evolving needs of the car wash industry.



ADRIATECH
TECHNOLOGY MEETS ART

Leading the Future of Vehicle Care

With 30 years of excellence since its founding in 1996, Adriatech has established itself as a premier force in the European car wash industry. From its high-tech production facilities, the company has successfully delivered over 2,000 projects across 40 countries, earning a reputation for blending progressive Croatian design with rigorous engineering standards. As a dominant European manufacturer, Adriatech is renowned for its iconic car wash structures - like the Simply and Quadra Nova - which prioritise both aesthetic appeal and long-term durability. By maintaining complete control over the manufacturing process and utilising high-grade components from world-class suppliers, Adriatech provides investors with a perfect synergy of cutting-edge technology and reliable, profit-driven performance.

LOVEGROVE



Contact Us!

 **61 8 9244 3300**

 **adriateh@lovegrove.net.au**

 **www.lovegrove.net.au**

